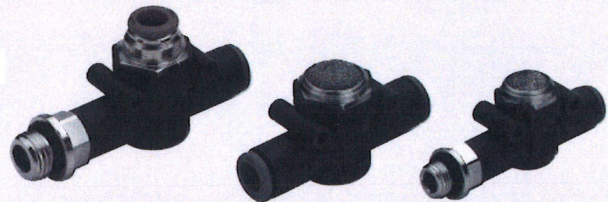


The VSR L quick-exhaust valve belongs to the LINE ON LINE® family, which means it can be connected to all the other components in series or in parallel.

Available in the version for pipe-pipe connection with two push-in fittings, and in the version for thread-pipe connection with a brass nickel-plated male thread and a push-in fitting.

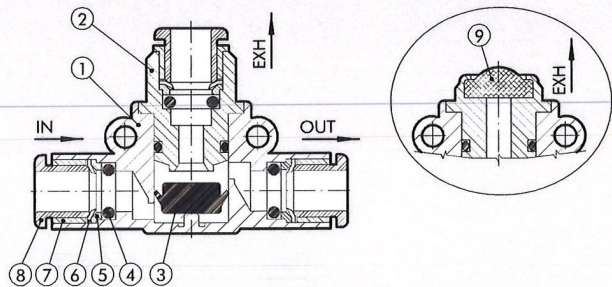
Exhaust can be silenced using a STAINLESS steel silencer, or conveyed using a push-in fitting.



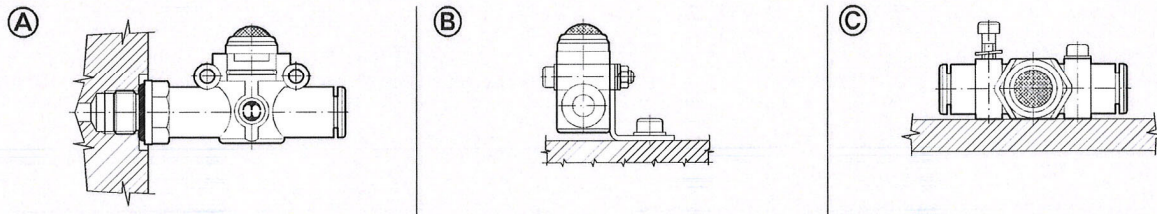
TECHNICAL DATA		Ø 4	Ø 6	Ø 8
Inlet pressure	MPa		0.1 - 1	
	bar		1 - 10	
	psi		14.5 - 145	
Temperature range	°C		-20 to +60	
	°F		-4 to +140	
Inlet flow rate at 6.3 bar ΔP 1 bar	Nl/min	50	270	400
Exhaust flow rate at 6.3 bar	Nl/min	100	700	1000
Recommended pipe		Rilsan PA 11 - Nylon 6 - Polyamide 12 - Polypropylene		
Fluid		Lubricated or unlubricated filtered compressed air; if used, must be continuous		
Compatibility with oils		Please refer to page 6-7 of the technical documentation		

COMPONENTS

- ① Technopolymer body
- ② Nickel-plated brass insert
- ③ NBR valve
- ④ NBR gasket
- ⑤ Technopolymer spring ring
- ⑥ Stainless steel folding spring
- ⑦ Brass or technopolymer locking bushing
- ⑧ Technopolymer release bushing
- ⑨ Stainless steel wire silencer



ASSEMBLY OPTIONS



How to mount the VSR L:

- Fig. (A) With the male threaded port it is possible to mount the VSR L straight onto the actuator.
- Fig. (B) Fixing to the plate with the special SQU L bracket.
- Fig. (C) There are two robust rings on the plastic body for fixing the VSR L straight onto the wall.

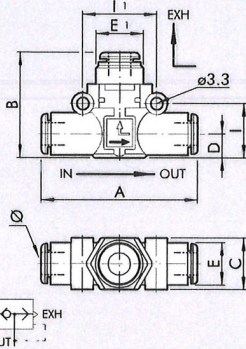
Quick-exhaust valve

»lineonline« Series

Type No. 430-4 to 433.038-8

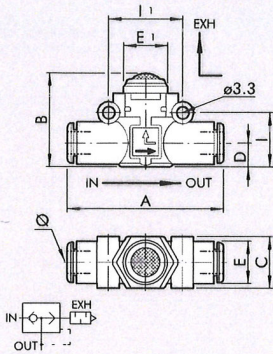


VSR L PIPE-PIPE, CONVEYED EXHAUST



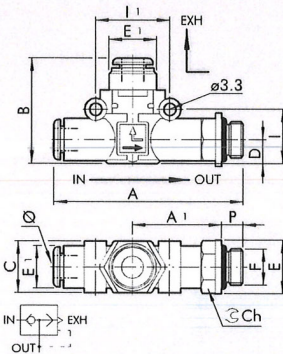
Code	Ref.	Ø	A	B	C	D	E	E1	I	I1
430-4	VSR L 4-4-4	4	41.8	25.8	10.7	5.6	10	9.7	12.8	16
430-6	VSR L 6-6-6	6	49.4	30.2	14.7	6.4	11.4	13	14.6	20
430-8	VSR L 8-8-8	8	57.3	35.9	18.7	9.1	13.8	15	18.7	24

VSR L PIPE-PIPE, SILENCED EXHAUST



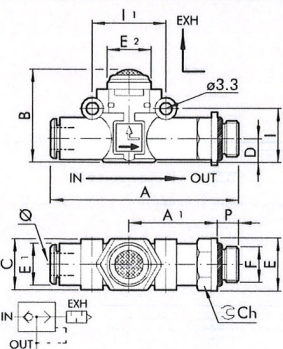
Code	Ref.	Ø	A	B	C	D	E	E1	I	I1
431-4	VSR L 4-4-SIL	4	41.8	19.8	10.7	5.6	10	10	12.8	16
431-6	VSR L 6-6-SIL	6	49.4	25.5	14.7	6.4	11.4	14	14.6	20
431-8	VSR L 8-8-SIL	8	57.3	31.5	18.7	9.1	13.8	18	18.7	24

VSR L PIPE-THREAD, CONVEYED EXHAUST



Code	Ref.	Ø	F	P	A	A1	B	C	D	E	E1	E2	I	I1	Ch
432.005-4	VSR L 4-M5-4	4	M5	4	47.7	22.7	25.8	10.7	5.6	9.9	10	9.7	12.8	16	9
432.018-4	VSR L 4-1/8-4	4	1/8	6	50.6	24.6	25.8	10.7	5.6	14	10	9.7	12.8	16	12
432.018-6	VSR L 6-1/8-6	6	1/8	6	58.5	27.8	30.2	14.7	6.4	14	11.4	13	14.6	20	12
432.014-6	VSR L 6-1/4-6	6	1/4	8	61.5	28.8	30.2	14.7	6.4	18	11.4	13	14.6	20	14
432.018-8	VSR L 8-1/8-8	8	1/8	6	66.2	31.8	35.9	18.7	9.1	15	13.8	15	18.7	24	14
432.014-8	VSR L 8-1/4-8	8	1/4	8	70.6	34.2	35.9	18.7	9.1	18	13.8	15	18.7	24	14
432.038-8	VSR L 8-3/8-8	8	3/8	9	72.2	34.8	35.9	18.7	9.1	22	13.8	15	18.7	24	17

VSR L PIPE-THREAD, SILENCED EXHAUST



Code	Ref.	Ø	F	P	A	A1	B	C	D	E	E1	E2	I	I1	Ch
433.005-4	VSR L 4-M5-SIL	4	M5	4	46.7	22.7	19.8	10.7	5.6	9.9	10	10	12.8	16	9
433.018-4	VSR L 4-1/8-SIL	4	1/8	6	50.6	24.6	19.8	10.7	5.6	14	10	10	12.8	16	12
433.018-6	VSR L 6-1/8-SIL	6	1/8	6	58.5	27.8	25.5	14.7	6.4	14	11.4	14	14.6	20	12
433.014-6	VSR L 6-1/4-SIL	6	1/4	8	61.5	28.8	25.5	14.7	6.4	18	11.4	14	14.6	20	14
433.018-8	VSR L 8-1/8-SIL	8	1/8	6	66.2	31.8	31.5	18.7	9.1	15	13.8	18	18.7	24	14
433.014-8	VSR L 8-1/4-SIL	8	1/4	8	70.6	34.2	31.5	18.7	9.1	18	13.8	18	18.7	24	14
433.038-8	VSR L 8-3/8-SIL	8	3/8	9	72.2	34.8	31.5	18.7	9.1	22	13.8	18	18.7	24	17

Summary Art. No.:

Type No.	Art. No.
430-4	106763
430-6	106764
430-8	106765
431-4	106766
431-6	106767
431-8	106768
432.005-4	106769
432.018-4	106770
432.018-6	106771
432.018-8	106772
432.014-6	106773
432.014-8	106774
432.038-8	106775
433.005-4	106776
433.018-4	106777
433.018-6	106778
433.018-8	106779
433.014-6	106780
433.014-8	106781
433.038-8	106782